



4580 W Roosevelt Rd. Hillside, IL 60162

Phone: 312-733-1098 Fax: 708-234-1351

SPECIFICATIONS

MODEL S-SS-S1816-14Ri-18 (18 Gauge)
S-SS-S1816-14Ri-16 (16 Gauge)

GENERAL

Fine quality Hand-Made sink formed of 18 gauge or 16 gauge, type 304 nickel bearing stainless steel.

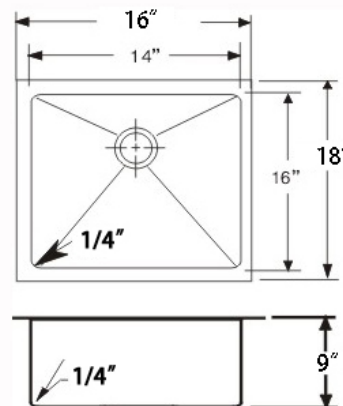
DESIGN FEATURES

Bowl depth 9 inches with inside bowl dimensions 16" X14" Over all 18" X 16"

Finish: Inside bowl surfaces polished to a uniform satin finish.

Underside: Five high density sound absorption pads covered with a thick rubberized insulation layer on all bottom surfaces.

Other: Drain opening 3 1/2".



CUPC certified
Minimum cabinet size: 24"

Product shall be specified as S-SS-S1816-14Ri-18 or

S-SS-S1816-14Ri-16



OPTIONAL ACCESSORIES:

Stainless Steel Bottom Grid: G3D3118

Sink Drain: A-SS-01, A-SS-02, A-SS-05



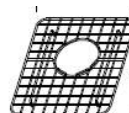
A-SS-01



A-SS-02



A-SS-05



G3D3118

Warranty:

Limited Life Time warranty against manufacturer defects and craftsmanship.