



4580 W Roosevelt Rd. Hillside, IL 60162

Phone: 312-733-1098 Fax: 708-234-1351

SPECIFICATIONS	MODEL	APO-S3118-20RI-18 (18 Gauge)
		APO-S3118-20RI-16 (16 Gauge)

GENERAL

Fine quality Hand-Made sink formed of 18 gauge or 16 gauge, type 304 nickel bearing stainless steel.

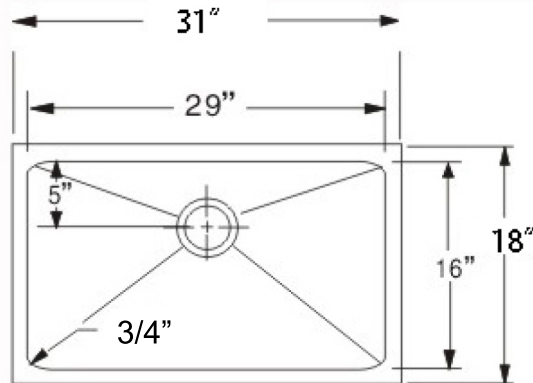
DESIGN FEATURES

Bowl depth 9 inches with inside bowl dimensions 29" X16" Over all 31" X 18"

Finish: Inside bowl surfaces polished to a uniform satin finish.

Underside: Five high density sound absorption pads covered with a thick rubberized insulation layer on all bottom surfaces.

Other: Drain opening 3 1/2".



cUPC Certified

Minimum Cabinet Size: 33"

Product shall be specified as APO-S3118-20RI-18
or APO-S3118-20RI-16

OPTIONAL ACCESSORIES:

Stainless Steel Bottom Grid: APO-G20S3118

Sink Drain: APO-SS01, APO-SS02



APO-SS01



APO-SS02

Warranty:

Limited Life Time warranty against manufacturer defects and craftsmanship.